



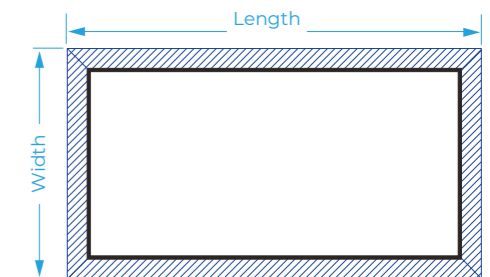
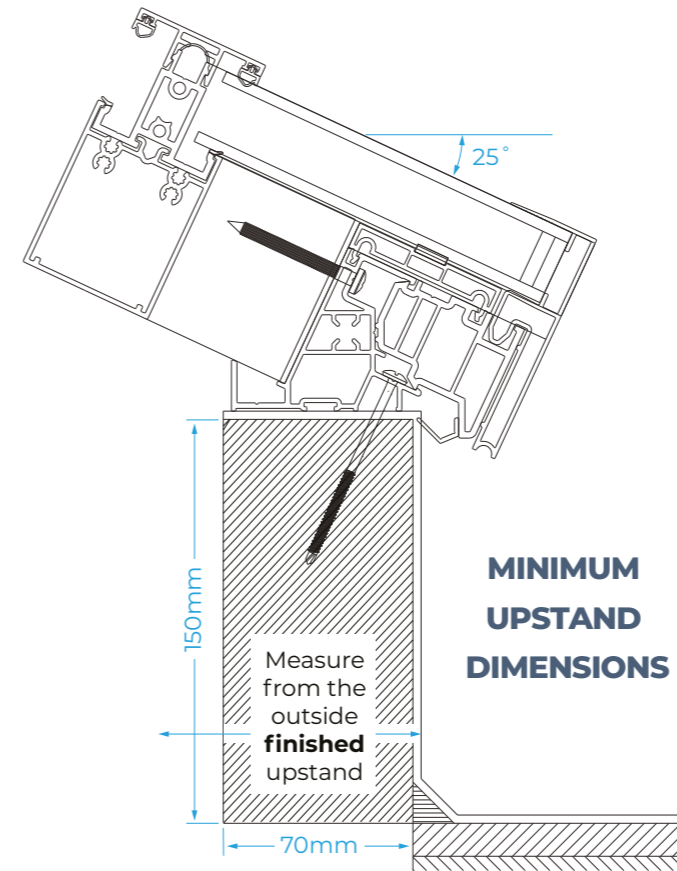
# S1 ROOF LANTERN



# Technical Information

## At a glance

- 25°pitch
- 8 styles
- 50mm sightlines Rafter, hip, jack rafters and ridge
- Max 3.2 x 6m
- SBD option
- 1.2KN/m<sup>2</sup> snowload  
Covering the whole of the UK up to 200m altitude.
- 1.0 U Value
- Part L Compliant



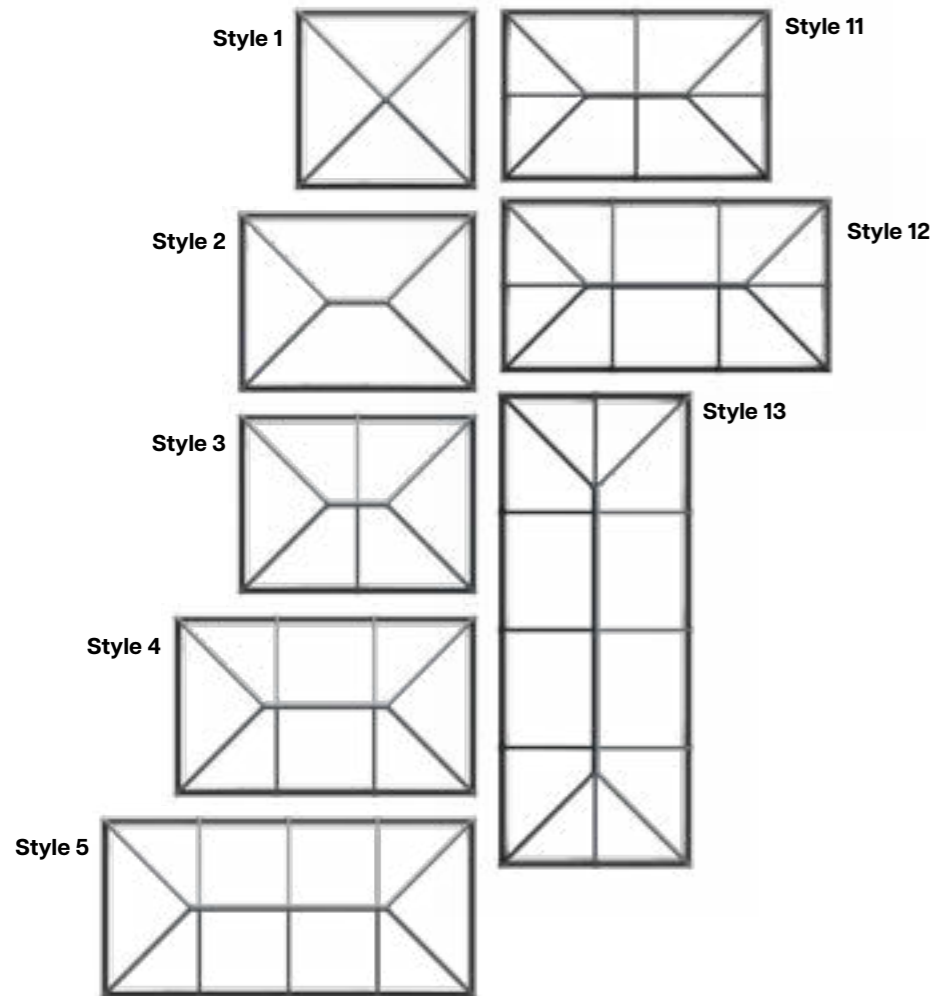
The lantern design assumes that the eaves beam is fully supported along all edges by a structural upstand capable of resisting the full vertical (as well as any lateral spread loads) applied by the lantern roof self-weight plus imposed snow / wind loads.

## 8 Standard Style Options

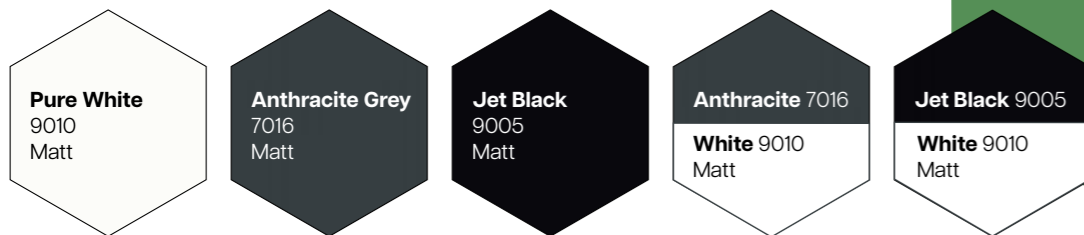
We fabricate 8 standard style options, in standard colours these are usually available in 10-15 working days.

## 5 Standard Colour Options

Bespoke colours are available to order, ask for details.



### STANDARD LANTERN COLOURS - All available in dual colour combinations.



### BESPOKE LANTERN COLOUR EXAMPLES

Please contact us for your requirements to discuss minimum order volumes. All available in dual colour combinations.



#### DISCLAIMER

Due to the variability of manufacturing processes and the differences in the methods used to represent these colours, we cannot guarantee an exact colour match between the actual paint colour and the colour as seen on-screen or when printed. The RAL colour references are also provided as a guide only and we recommend asking to see a physical sample prior to order if required. All colours and finishes are supplied within standard tolerance ranges.

Technical information, specifications, literature and other materials are provided for illustration only, and may show and refer to product options. The accuracy of such information is not guaranteed and is subject to change without notification. The evaluation and selection of products and determining whether products are suitable for their intended use should be discussed between the end user and the installer/fabricator, as this falls outside our remit as system component manufacturer.





SCAN ME

Product Features Video

Patented' Sheerline corner joint provides structural integrity and reduces misaligned corners.

Intelligent system design creates an ultra secure lantern for added peace of mind.

Unique Thermlock® technology gives class leading thermal performance.

Low line glazing and inline rafter cappings create the ultimate contemporary look.

Manufactured in-house in the UK, for a robust and agile supply chain you can rely on.

5

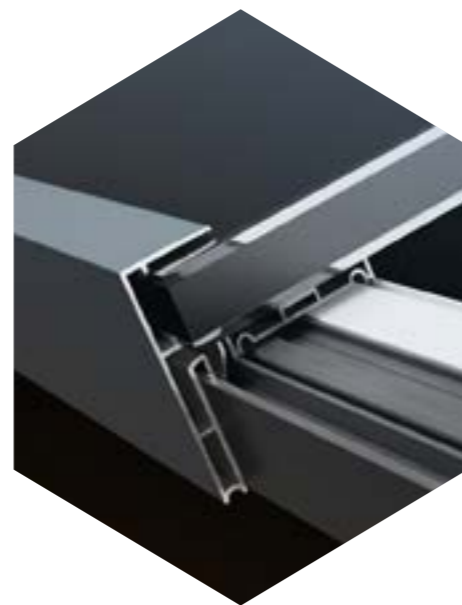
house colour options

Bespoke colours also available

See page 2 for details.



The S1 system combines security, thermal performance and refined looks to create the ultimate next generation aluminium lantern roof.



### The UK's most secure lantern roof

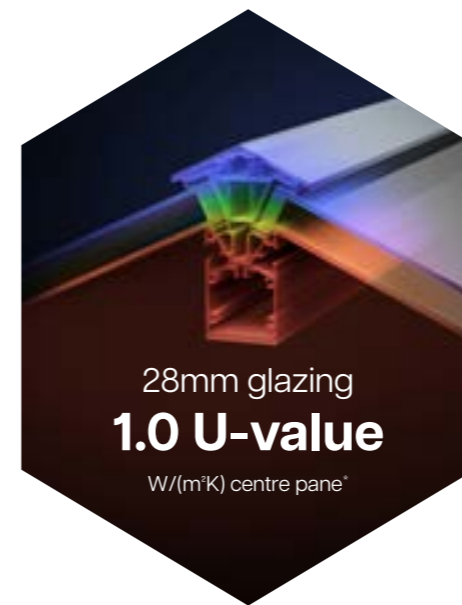
Anti-tamper screws, enclosed anti-tamper glazing, security tape and a patent pending glass lock, alongside S1's high security ridge end, combine to make Sheerline's S1 system the UK's most secure non bonded aluminium lantern roof'.

\*Patent registration number: GB2569209 \*Mainstream residential roof lantern.



Secured by Design  
SBD  
Official Police Security Initiative  
UPGRADE OPTION AVAILABLE

The SBD upgrade uses security clamping plates to lock laminated glass in place, preventing lifting and removal by would-be intruders' even if rafter top caps have been removed. These stainless steel components are held firmly in place by security screws for added strength.

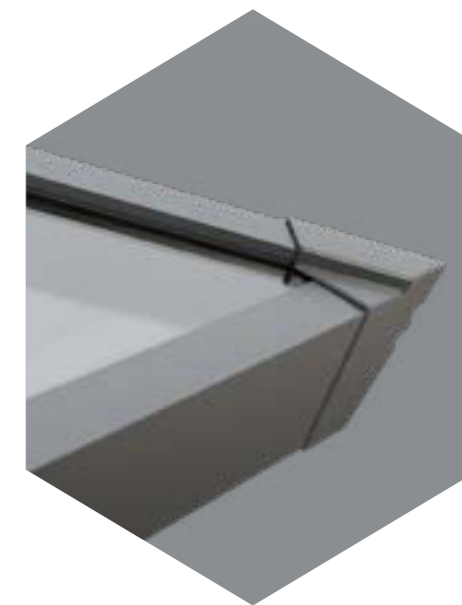


28mm glazing  
**1.0 U-value**  
W/(m²K) centre pane\*

### Thermlock® technology

Our next generation lantern provides exceptional thermal performance using 28mm glazing combined with Thermlock® closed-cell, insulating chambers to create class leading thermal performance, far superior to traditional polyamide thermal breaks.

\*Subject to glass specification. \*Based on SBD's test criteria.



### Slim, ultra low line aesthetics

Careful attention has been given to style with rafter and hip top caps sitting just 8mm above the exterior glazing level. While corner and rafter end caps run perfectly in line with the perimeter of the lantern, creating a sleek and refined architectural appearance.

PART L

Compliant ✓



### At a glance

- 25°pitch
- 8 styles
- 50mm sightlines  
Rafter, hip, jack rafters and ridge
- Max 3.2 x 6m
- SBD option
- 1.2KN/m² snowload  
Covering the whole of the UK up to 200m altitude.
- 1.0 U Value
- Part L Compliant

The S1 roof lantern delivers real benefits to homeowners in a system that is installer friendly.

**THERMLOCK**<sup>®</sup>  
technology inside

## Thermal performance

Thermlock<sup>®</sup> multi-chamber technology used in the eaves beam, ridge and all rafter and hip bars creates an exceptionally thermally insulated lantern. With a unique co-extruded perimeter seal ensuring draughts and rain are kept safely outside, while 28mm glazing allows acoustic dampening glass to be fitted if required.

Our eaves beam design also ensures aluminium sections remain internal, preventing cold bridging and condensation issues.

## Installer friendly

Unique hook brackets support the hip rafters during construction, simplifying fitting on site and speeding up installation. We've also designed out many common issues installers encounter and include internal rafter end caps to prevent bars marking the eaves beam during installation.

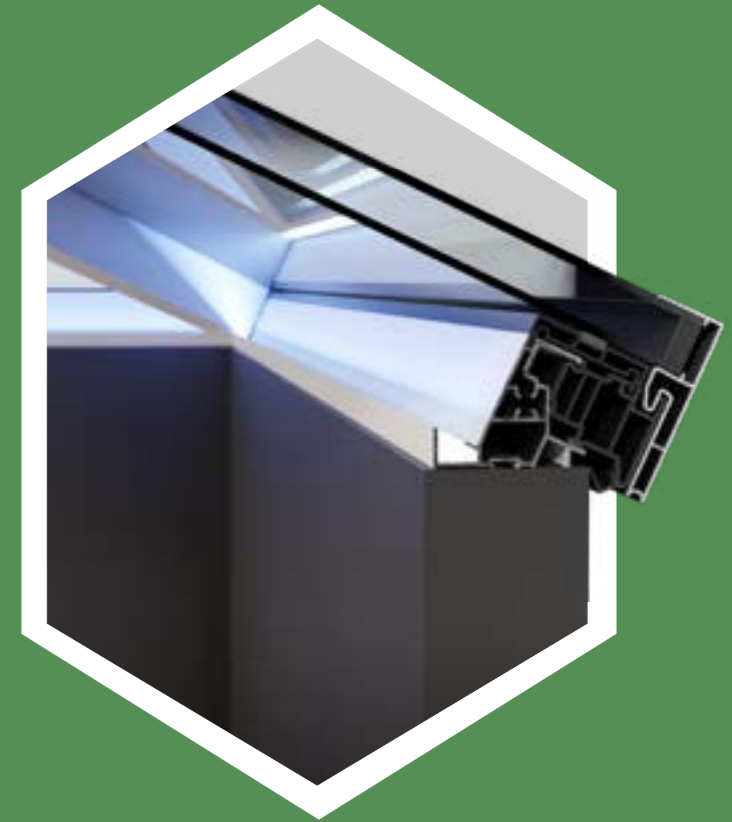
## Style options

Sheerline aluminium roof lanterns are available in a choice of 8 styles from square 'pyramid' designs to grander options suitable for larger 'orangery' style installations.

Maximum sizes range from 3.2 up to an impressive 6m long, all set at a 25° pitch and all weather rated for the whole of the UK\*.

S1 lanterns also feature an integral LED light channel in the eaves beam – giving an easy way to add lighting to an installation if required.

\*Rated for a snow load of 1.2 KN/m<sup>2</sup>.  
Covering the whole of the UK up to 200m altitude.



## 3 way option

Adding three more styles to the S1 roof lantern, our new 3 Way option allows for bigger spans to be catered for without the need for jack rafters.

All with the same sleek aesthetics as our existing 2 and 4 way designs.

## Next generation lantern

### Secure, sustainable and stylish

Deep internal roof bars, clean lines and discrete external aesthetics create an exceptional looking roof. Innovative design and patented technology ensure it's also the most secure and thermally efficient.



# The rest of our product range



## Patio Doors

Aluminium patio doors operate an in-line slider designed to last.

They are a minimalist and space saving alternative to a traditional back or French door, creating vast amounts of light and unobstructed views.



## Slimline Patio Doors

Fabricated at our facilities in the UK with profiles supplied from Cortizo, these contemporary patio doors are made with slimmer sightlines.

They offer unmatched visual appeal, while remaining strong and secure.

Our profiles allows for a flush to floor fitment creating a flowing transition from interior to exterior and eliminates trip hazards.



## Bi-fold

Delivering unrivalled visual appeal, our bi-fold doors come in a range of configurations, with homeowners able to choose from between two to seven panels.

They can be installed as an external door opening your home, conservatory or extension into your garden or patio.

However, bi-fold doors are also a fantastic option internally, separating one larger room into two smaller ones.



## Front Doors

Our premium quality aluminium Designer Doors offer the ideal blend of security and style.

Whichever door suits your home, you can be sure of its outstanding performance, with high-quality locking mechanisms and precision construction combining to give unbeatable strength and security.

# The rest of our product range



## Flat Roof Light

This is a unique fixed flat rooflight system that is ultra slim and provides a contemporary look for your project.

Our roof lights are amongst the most energy efficient available and are fabricated in the UK at our specialist facilities.



## Ballustrade

This is a revolutionary new design of fully integrated frameless glass balustrade system, which is thermally broken and is fully integrated to fit bi-fold, sliding French doors and tilt and turn window systems.

We believe this is one of the safest glass balustrade systems available, using 17.5 mm toughened laminated glass as standard.

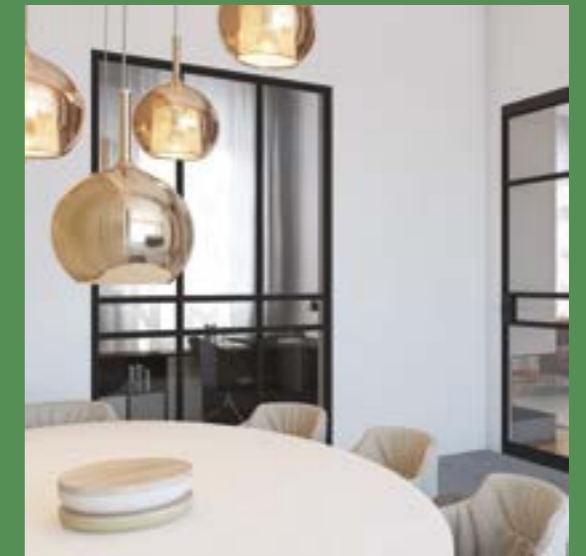


## Windows

Our fixed and opening aluminium glazing products can be utilised in many ways to create impressive living and work spaces.

Our windows are ideal for high-value residential and commercial projects.

With versatile frame finishes, including a wide range of colour options our aluminium windows will complement the aesthetics of any property.



## Interna

Create contemporary designs that create light elegant living and work spaces. Interna is a made to measure solution for your partition requirements.

A modern take on a classic industrial/art deco style. Interna is undeniably stylish, built bespoke at our UK facilities and available in a range of colours and configurations.



[WWW.GLASSROOFSUK.COM](http://WWW.GLASSROOFSUK.COM)

01252 964 444

[sales@glassroofsuk.com](mailto:sales@glassroofsuk.com)

No part of this brochure may be copied or reproduced in any way without written permission from Total Installations Ltd, we reserve the right to alter specifications without prior notice. The information in this brochure should not be acted upon without independent consideration and professional advice as to fitness for purpose, safety and service and requirements. Total Installations Ltd will not accept liability for any loss to any person acting or refraining from acting as a result of this brochure information.

©2023 Total Installations Ltd | Brochure GRS1-Trade V1-2023